

I have bees! Identifying what's in the hive

When you open any hive, there are only so many things you will see. Here is a list of the main things you will see:

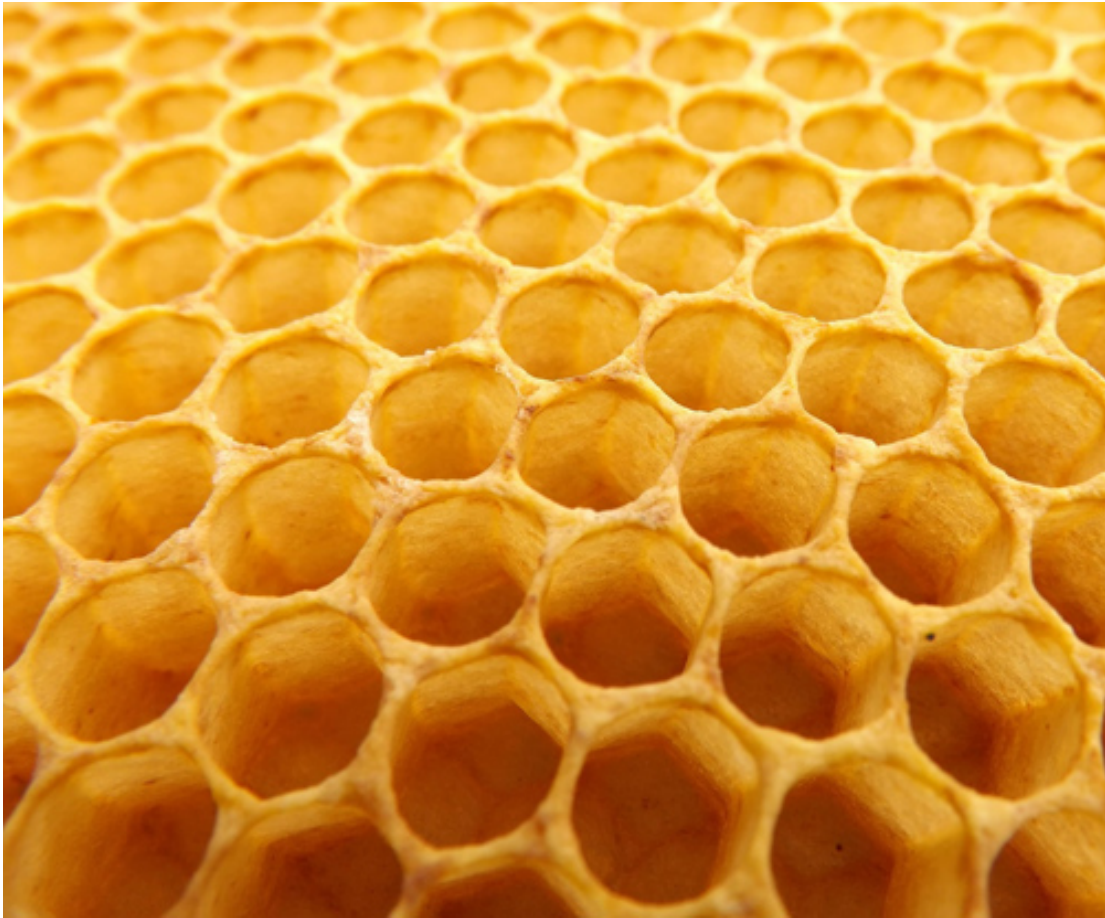
- Frames with foundation
- Frames with drawn comb
- Eggs
- Larvae
- Capped Brood
- Empty Chambers (hatched)
- Pollen
- Uncapped Honey
- Capped Honey
- Queen Cells
- Drone Cells

Here is what it looks like:

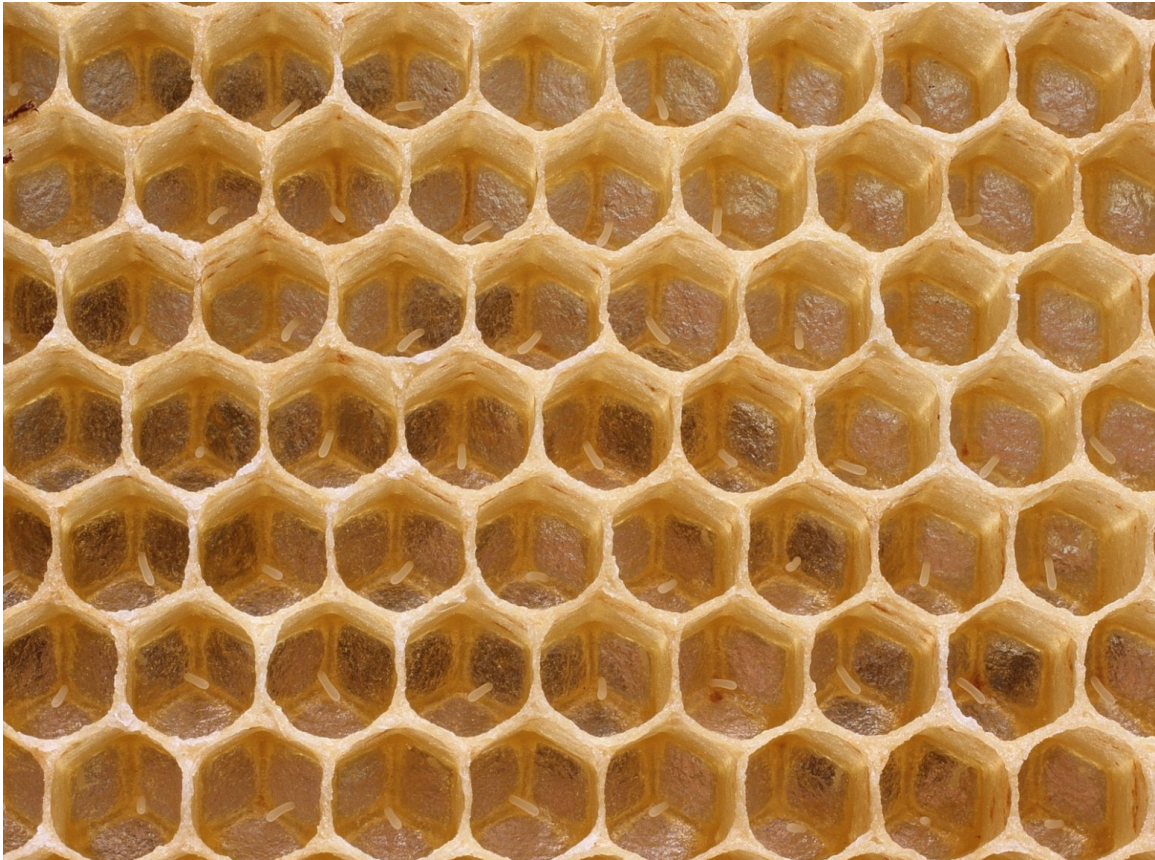
Frames with foundation



Frames with drawn comb



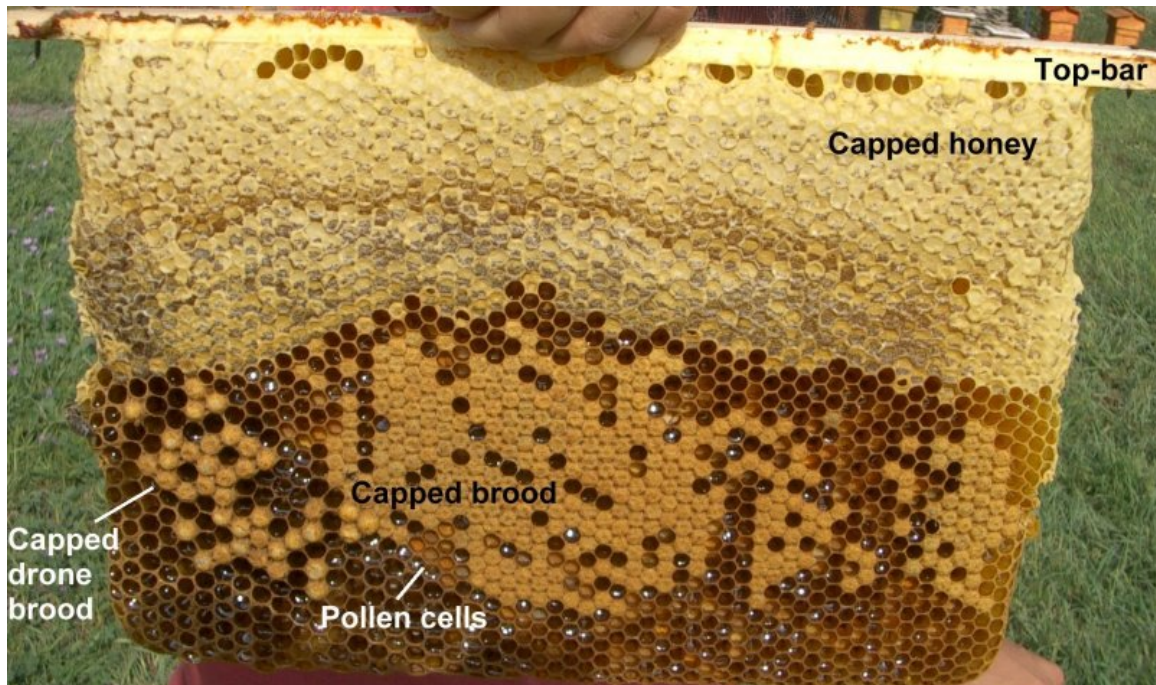
Eggs



Larvae



Capped Brood



Empty Chambers (hatched)

Pollen



Uncapped Honey



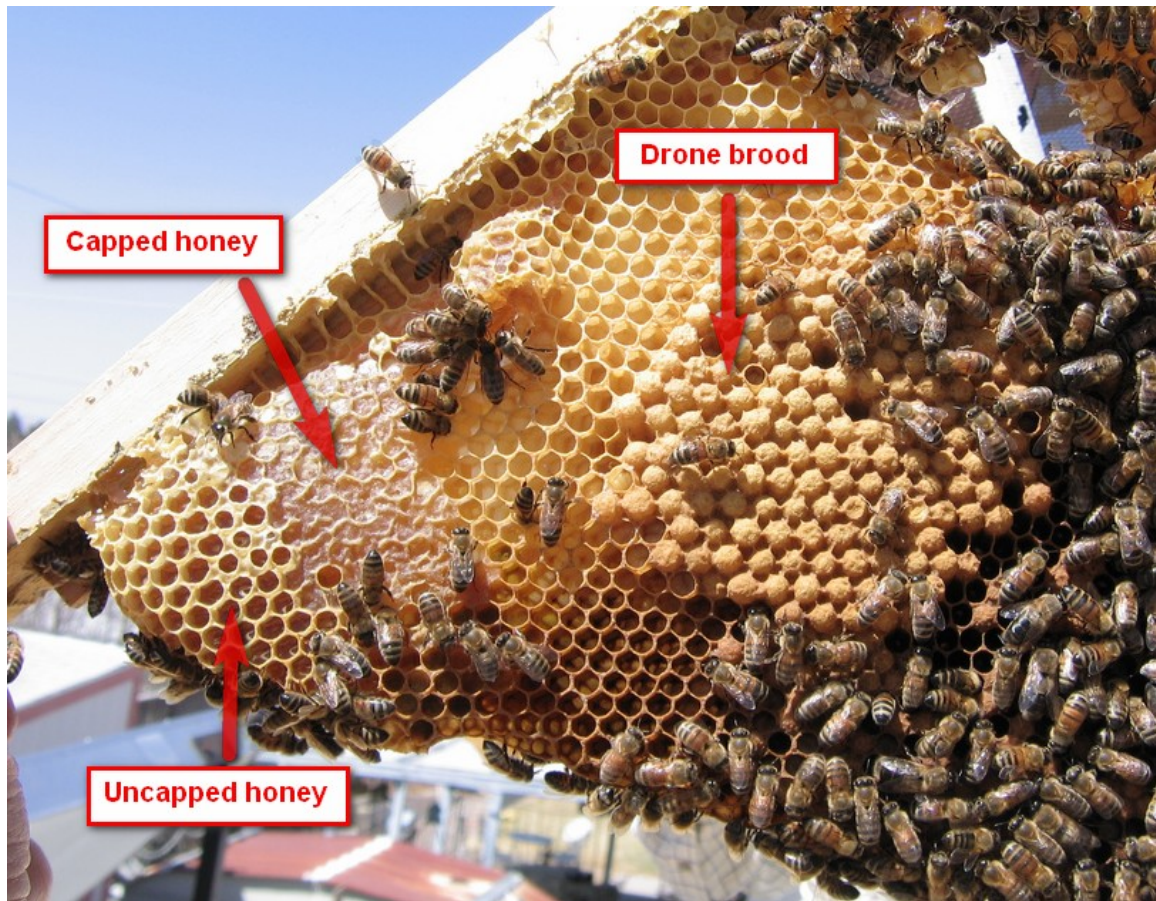
Capped Honey



Queen Cells



Drone Cells



Queens at work – What do I do???

This is what you want to see:



What to look for:

- Rainbow pattern of open drawn comb with pollen & honey on the outer edges
- Laying pattern – capped or oldest larvae in the middle going younger larvae and then eggs as you get farther out on the wheel (usually counter-clockwise) - go look for it, as it will help you identify the different brood types and what they look like – probably see honey & pollen in the rainbow
- Open drawn comb in the center frames of the hive – queens like to lay in the middle – she also like to go UP in the hive, so look up/down (this is why you don't shuffle the frames unless you have specific purpose)
- Pollen next to brood – many times on the same frame
- Cramped spacing –
 - Move open frames adjacent to brood, or above
 - Score wax off honey and place in the middle

When to add 2nd Deep?

- 75-80% brood in 1st Deep – add the second deep

When to add Super?

- 7-8 frames of bees in the 2nd deep
 - Excluder
 - No excluder