



JCBA Officers 2015

President – Chip Braswell 919-810-7547 barbermillbees@hotmail.com
Vice-President – Ray Hunt 919-585-5775 shadwin@earthlink.net
Secretary – Jordan Myers 828-310-0698 jordanblaine.myers@gmail.com
Treasurer – Chris Stark 919-331-9078 cfs@rogersstark.com
Program Chair – Kim Underhill 919-272-4450 bigoakbeefarm@gmail.com
Executive Board (Year 3) Jim Dempster 919-257-3289 jrdempster@hotmail.com
Executive Board (Year 2) Ronnie Fish 919-669-9892 ronniefish@gmail.com
Executive Board (Year 1) Kathy Sommese 919-395-6796
beetlebug1968@gmail.com
Web Master – Charles Kneeshaw 919-424-7060 cbkneeshaw@gmail.com
Public Relations – Billy Wiggs

January 19th Program: Farewell to our Queen!



Yes our Queen Bee, Amie Newsome, has been offered a wonderful opportunity in Charlotte, NC and will be leaving our hive in January.

We are very sad to see her go, just like losing your very favorite queen...but life happens! So come prepared to celebrate Amie and wish her well as she begins this new chapter in her life and career!

No one will or could ever take your place. Thank you for all that you have done for Johnston County, Johnston County Beekeepers, honey bees, and beekeepers across North Carolina and for the countless hours of service you have so generously and willingly provided.

You will be missed.

We love you Amie!

Dear Friends, Fellow Beekeepers and honey bees,

It is with a heavy heart that I have to share with you that our NC Father of Beekeeping, Dr. John Ambrose, friend of the bees, mentor to some, supporter of us all, has passed away. His absence will be notable and the void he will leave will be great. His tireless work in our community, however, will continue to touch each of us and his legacy will inspire beekeepers for years to come. The programs he established, the education he provided, the passion for beekeeping that he bestowed, and the humor in which he did it all, are a large part of why beekeeping in North Carolina today is so incredible. Thank you Dr. Ambrose. We miss you.



The family will receive visitors from 5-7 p.m. on Thursday, January 15th, at Brown-Wynne Funeral Home, 1701 E. Millbrook Road, Raleigh, NC 27609.

Services and a celebratory wake will be held at 3 p.m. on Friday, January 16th, at the Carol Johnson Clubhouse on NC State's Centennial Campus, 1509 Main Campus Drive, Raleigh, NC 27606.

The family requests that memorial contributions be made in his memory to Alliance of Disability Advocates (<http://www.alliancecil.org/donations.htm>), P.O. Box 12988, Raleigh, NC 27605; a veterans charity of choice; or the NCSU Apiculture Science Fund (<http://www.cals.ncsu.edu/entomology/apiculture/>).

As always, let me know if you have any questions at 919-272-4450 or bigoakbeefarm@gmail.com.

BEE CULTURE

The Magazine of American Beekeeping

Professor John Ambrose

North Carolina State University professor John Thomas Ambrose, well-known to students for his popular Introduction to the Honey Bee and Beekeeping class, has died at age 70.

He was the newly elected president of the North Carolina Beekeepers Association at the time of his death.

Ambrose's interactive teaching methods drew many students to take his class. It eventually became one of the most popular biological science electives on campus, enrolling about 200 students each semester.

"By far, anyone will tell you the most memorable thing about the class was the swarm demonstration," says Kelsey Schmitz, a sophomore studying history and anthropology who took Ambrose's beekeeping class last spring. "He would make the bees swarm by picking up a big stick with them on it and flinging it around it in the air. It was so cool. He was so comfortable around the bees."

Ambrose joined the faculty of the Entomology Department in 1975 after grad school at Cornell University studying under Dr. Roger Morse. He came on board as an assistant professor with responsibilities for developing both extension and research programs in apiculture.

In his research position, he developed and provided research-based information to support the important commercial and hobbyist apicultural interests of the state and the critical role that bees play in the pollination of many of its most important horticultural commodities.

As part of his extension activities and through his close association with the North Carolina Beekeepers Association and the NC Department of Agriculture and Consumer Services, Ambrose, in 1982, initiated one of the country's earliest and arguably strongest and largest master beekeepers programs. He later used this model to further develop the Master Beekeeper program for the Eastern Apicultural Society, a position he held until the mid-1990s.

North Carolina's program was designed to teach beekeepers to train other beekeepers through a carefully structured, tiered educational program, it served as a model used by many other states as they developed their own master beekeeping programs.

In his research program, Ambrose focused initially on pollination biology and social behavior of honey bees, but the scope expanded over his 25 years in the department to include a wide spectrum of issues critical to bee biology, production and health.

Two years after joining the university, he added the teaching of basic and advanced courses in apiculture to his research and extension responsibilities. He developed a distance education version of the course in the mid-1990s which was offered each summer with regular enrollments of 50 additional students a year.

Ambrose is survived by his wife Judith and daughter Caroline and son Zach.



A printable [membership form](http://www.jacobee.org/membership/) (PDF) to join the Johnston County Beekeeper's Association can be located on our website. Copy and paste: <http://www.jacobee.org/membership/>

Please print out the form and bring it to our next meeting along with your check made out to: Johnston County Beekeepers.

Or you can mail your completed form to:
Johnston County Beekeepers
c/o Chris Stark
100 N. Sunset Ridge Drive
Willow Spring, NC 27592

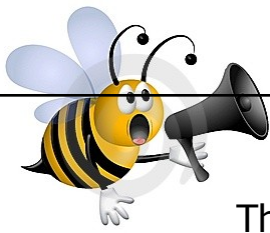
Membership dues:

Individual memberships—\$10.00

Family memberships—\$15.00—List all family members to be included

**We are asking for all members to have their dues
paid by the end of January 2015.**

We thank you in advance for your cooperation!



What you need to know

The Johnston County Beekeeper's Association meets on the
third Monday of each month at 7:00 pm
at the Johnston County Agricultural Center
2736 NC 210 Hwy.
Smithfield, NC.

Website: www.jacobee.org

Our website is a great resource for information, upcoming events and beekeeping help.

Johnston County Beekeeper's 2015 Program Agenda

(programs/speakers may be subject to change)

Jan 19th: Farewell to our Queen Party/ Save the Honey Bee License Plate-Sandy Carlson

Feb 16th: Bailey Bee Supply - The latest and greatest gadgets in beekeeping

March 16th: Artificial Swarming Techniques: Keeping your bees at home: Kim Underhill

April 20th: TBD

May 18th: Will Hicks – Apiary Inspection

June 15th: Dr. Tarpy– Webinar on Queen Instrumental Insemination

July 17th: FRIDAY: Tour de Hive: Field Trip to Bayer Bee Care in Clayton, NC

August 17th: Mite Treatments up close and personal

Sept 21st : Master Beekeeper Charles Heatherly: Overwintering Hives

Oct 19th: TBD

Nov: 16th: Al Hildreth Making Mead—The nectar of the gods.

Dec 21st: Annual Christmas Banquet

February 2015

NCSBA Spring Meeting: February 5-7th See the next page for details or
Visit web: www.ncbeekeepers.org

May 2015

Ham & Yam Festival Saturday, May 3rd.

For details: <http://www.hamandyam.com>

Please plan on helping with the booth that day. Sign up will be soon!

July 2015

NCSBA Summer Meeting: July 9-11th

Visit web: www.ncbeekeepers.org for more details

Big Oak Bee Farm is now taking orders for spring packages.

Contact: Tom & Kim Underhill for details

919-272-4450

bigoakbeefarm@gmail.com



Yippee! Bee School is back!



**Feb. / March
Wednesday Nights
6:00 pm – 9:00 pm**

What: Beekeeping Short Course for Beginning Beekeepers

Where: Johnston County Agricultural Center (2736 NC Highway 210, Smithfield, NC 27577)

When: February 4th to April 1st (8 weeks on Wednesday nights) from 6:00 pm– 9:00 pm

Who: Honey bee enthusiasts, FFA students, local growers and interested general public

Why: This workshop is to help people understand and appreciate honey bees while learning to raise them.

Contact: Phyllis Croom at 919-989-5380 or pbcroom@ncsu.edu to register and details

Sponsored By: Johnston County Cooperative Extension Office and
Johnston County Beekeeper's Association

Cost: \$75.00 for class materials

**Pre-registration is by January 30th. Make checks
payable to Johnston County Agriculture Center.**



2015 NCSBA-SCBA Spring Conference

The North Carolina State Beekeeper's Association (NCSBA) is hosting the joint North Carolina and South Carolina Beekeepers Spring Conference in Monroe, NC at the Union County Cooperative Extension Center on **February 5, 6, & 7, 2015**. The theme for this conference is "Protecting Our Bees."

Guest speakers and workshop presenters will include:

- Kim Flottum, Editor, Bee Culture Magazine;
- Dr. Keith Delaplane, Professor of Entomology, University of Georgia;
- Jennifer Berry, Research Professional III, University of Georgia;

Workshop topics will include:

- Hive management
- Hive products
- Wax processing

The "Ask the Experts" session will be held Friday morning and questions asked of the experts during this session will be answered through out the remaining sessions of the conference. More detailed information will be available "on the event's website".

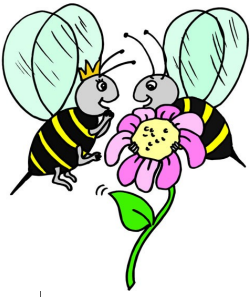
Register early! Go here to register:

<http://www.ncbeekeepers.org/education/statewide-conferences/2015-ncsba-scba-spring-conference/>

If you are planning to go to the NC State Beekeeper's Association Spring meeting February 5-7, 2015 in Monroe, NC, please renew your NCSBA membership as soon as possible in order to get the reduced member-rate for the meeting registration. The NCSBA Membership Coordinator Laurie Shaw has requested this. You can print the form from the website: ncbeekeepers.org, complete, and submit it with payment to her as indicated. Laurie emphasized that IF IT IS A RENEWAL, you should indicate your membership number at the top of the form in the space provided. If you do not know your number, you can contact her to get it prior to sending in your payment.

Also make sure you indicate on the form in the space provided that your local chapter is "**Johnston County Beekeeper's Association**" if that is the club you want to be listed under in the NCSBA yellow membership book. No matter how many local chapters you belong to, you will be listed under only the one you designate on this form.

NCSBA, Laurie Shaw, Membership Coordinator, P. O. Box 1627, Clayton, NC 27528
Phone 919-585-6052 Email address: shaw@tyler-carter.com



In and Around the Bee Yard

It is a well known fact: Ask 3 beekeepers what you should be doing in your bee yard this or any time of year... and you will get 103 answers!

Why? Not to frustrate you, but rather because what works for them differs depending on the strength of the colony, weather, season, experiences and beekeeping approach among many other variables.

This section is to highlight some considerations for your apiary this time of year.

For specifics, it is suggested that you read, research, talk to other beekeepers, as well as document what you do so you can refer back and decide what works best for you and your bees.

Seasonal Conditions:

- Short days and long nights

- Temperatures (normally— it has been anything but) are too cold for flights

Food Stores:

- Normally— food consumption is down due to minimal activity and brood rearing

Honey Bee Activity:

- Weather plays a very critical role in what you will see and need to do in the bee yard

- Generally during this time of year there is little activity in the colony

- Bees are clustering to keep the Queen, Brood Nest, and Colony warm. Even when it is below freezing outside, the temperature around the brood nest is about 92 degrees.

- Cleansing flights will occur on warm days (45 – 55 degrees)

- Mid January, brood rearing begins again in preparation for Spring. The longer day lengths will trigger the Queen to increase her egg laying.

Beekeeper Duties:

- Monitor food stores—occasionally lift the back of the hive to determine weight—heavy or light?

- Check entrance reducers/mouse guards to ensure no debris has blocked entrance

- Check for moisture build up: Check inside the top cover for moisture. One way to increase ventilation is to use popsicle sticks between inner cover & top box or place 1/4 inch blocks between inner cover and the top cover.

- Perform quick hive check on weather permitting days. Weather permitting is usually defined as 50 degrees or above with little or no breeze and preferably sunny. A good indicator whether it is warm enough to take a peek and work the hive is you see bees flying—that is more than 1 or 2!

- You may think about feeding sugar syrup (your choice, light or heavy) particularly if it has been a warm/mild winter.

Beekeeper Activities:

- Pay your Club & NCSBA dues for the year

- Become a better beekeeper through club participation, meetings, activities, reading, & studying

- Volunteer to mentor a new beekeeper, speak about bees at elementary schools

- Inspect, repair, replace equipment and prepare for the spring honey flow

- Order your bees: packages/nucs

- Order needed equipment

- Request new beekeeping catalogs from suppliers

- Review your notes from last year and see what worked and what didn't

- Put a plan in place for this year

- Have fun!

Help Support the NCSU Apiculture Program

MAKE A DONATION

There are three means to donate to the Apiculture program.

- Donate online at the Apiculture Program website homepage. You can pay by credit card and the donation goes through the NCSU Agriculture Foundation. To donate this way, go to <http://www.cals.ncsu.edu/entomology/apiculture/> and click on the **large red "Make a Donation" button**. *Note: Donations made through the online system garner only a 5% overhead charge.*
- Donate directly to NC State's Apiculture Science fund as an unrestricted donation for the general support of research and extension programs. There are many research projects currently underway and are listed on the research and extension websites (http://www.cals.ncsu.edu/entomology/apiculture/research_projects.html).

Note: Donations made for research on a specific topic garner a 51.5% overhead charge deducted from donated funds. However, a "no strings attached" donation to the Apiculture Program general research program generally has most of the overhead fees waived (only 5% overhead charged) and this helps the donation go much farther. If you choose this option to donate, make sure to attach a letter with the donation stating your intention for the donation.

- Donate items to NCSBA for the Spring or Summer Conference Silent Auction. Proceeds from this auction will go to the NCSBA Apiculture Science fund. The monies are held in the NCSBA account until needed. When the need arises among students in the NCSU Apiculture program and there are sufficient available, Dr. Tarpy has the student(s) write a short grant to the NCSBA.



MAKE A DONATION



Johnston County Agricultural Center
North Carolina Cooperative Extension Service
College of Agricultural and Life Sciences
2736 NC 210 Highway
Smithfield, N.C. 27577
(919)989-5380
Official Business