



## What you need to know

The NC Johnston County Beekeepers Association meets the third Monday of each month at 7:00pm at the Johnston County Agricultural Center 2736 NC 210 Hwy., Smithfield, NC.

### Website: [www.jocobee.org](http://www.jocobee.org)

Our website is a great resource for information, upcoming events and beekeeping help.

### **January Meeting:**

#### Date:

Monday Jan 20th @ 7:00pm

#### Location:

Johnston County  
Agricultural Center  
2736 NC 210 Hwy.  
Smithfield, NC.

### Program Agenda Features:

- Epi Pen  
Training & Certification
- NCSBA Regional Rep.  
Rick Coor  
Updates for NCSBA
- Review of JC Beekeeping  
Association Constitution &  
By-laws
- Snacks & Beverages  
will be served

### **Raffle**

We will raffle off a complete 10 Frame hive including:  
Screened Bottom Board,  
1 Deep, Frames with  
Plastic Foundation, Top Feeder,  
Inner Cover &  
Top Cover!  
So bring your dollars !!

Donated by Jim Dempster  
**Thank you!**

## **Happy Beekeeping New Year!**

### This is the year of the Johnston County Beekeeper’s Association!

So strap down your hives, light your smokers, find your hive tool and get ready for a Rockin’ Beekeeping, Queen Raisin’, Honey Makin’, Hive Splittin’, Sugar Shakin’, Varroa Killin’, Hive Beetle Smashing year!

### Why?

We’ve got our sites on winning the Golden Achievement Award and need everyone on board. We are taking no prisoners!

### How do we know this is OUR year?

We heard you! We understand what you want!  
A Big Thank You to all that took the time to fill out the survey.  
Your input helps us to serve you! JOCO Beekeeping Club  
ROCKS—because of you! Our members!

Your elected slate of Officers & Directors have been hard at work clustered together deep within our hive to knock out a varied, quality, action packed, educational, hands on, networking program agenda for this year.

### **Who are the Officers & Directors for 2014?**

Let me proudly introduce them:

President ~ Chip Braswell  
Vice President ~ Kim Underhill  
Secretary ~ Sharon Noles  
Treasurer ~ Mary Jones  
1<sup>st</sup> Director ~ Rich Bennek  
2<sup>nd</sup> Director ~ Jim Dempster  
3<sup>rd</sup> Director ~ Ronnie Fish  
Public Relations Representatives:  
~Billy Wiggs & Charles Kneeshaw



Members, please take a moment to meet, introduce yourself, and help our officers and directors get to know you.



# Yippee! Bee School is back!

**Feb. / March**  
**Wednesday Nights**  
**6:00 pm – 9:00 pm**



## **What: Beekeeping Short Course for Beginning Beekeepers**

**Where:** Johnston County Agricultural Center (2736 NC Highway 210, Smithfield, NC 27577)

**When:** February 5th to March 26th (8 weeks on Wednesday nights) from 6:00 pm– 9:00 pm

**Who:** Honey bee enthusiasts, FFA students, local growers and interested general public

**Why:** This workshop is to help people understand and appreciate honey bees while learning to raise them.

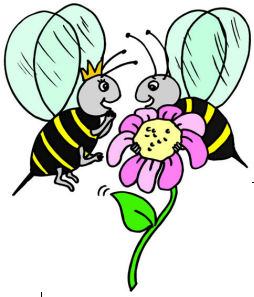
**Contact:** Amie Newsome at [amie\\_newsome@ncsu.edu](mailto:amie_newsome@ncsu.edu) or 919-989-5380

**Sponsored By:** Johnston County Cooperative Extension Office and  
Johnston County Beekeeper's Association

**Cost:** \$50.00 for class materials

**Pre-registration is January 31st. Make checks  
payable to Johnston County Agriculture Center.**





## In and around the Bee Yard

It is a well known fact: Ask 3 beekeepers what you should be doing in your bee yard this or any time of year... and you will get 103 answers!

Why? Not to frustrate you, but rather because what works for them differs depending on the strength of the colony, weather, season, experiences and beekeeping approach among many other variables.

This section is to highlight some considerations for your apiary this time of year.

For specifics, it is suggested that you read, research, talk to other beekeepers as well as document what you do so you can refer back and decide what works best for you and your bees.

### **Seasonal Conditions:**

-Short days and long nights

-Temperatures (normally— it has been anything but ) are too cold for flights

### **Food Stores:**

-Normally— food consumption is down due to minimal activity and brood rearing

### **Honey Bee Activity:**

-Weather plays a very critical role in what you will see and need to do in the bee yard

-Generally during this time of year there is little activity in the colony

-Bees are clustering to keep the Queen, Brood Nest and Colony warm. Even when it is below freezing outside, the temperature around the brood nest is about 92degrees.

-Cleansing flights will occur on warm days (45– 55 degrees)

- Mid January, brood rearing begins again in preparation for Spring. The longer day lengths will trigger the Queen to increase her egg laying.

### **Beekeeper Duties:**

-Monitor food stores—occasionally lift the back of the hive to determine weight—heavy or light?

-Check entrance reducers/mouse guards to ensure no debris has blocked entrance

-Check for moisture build up: Check inside the top cover for moisture. One way to increase ventilation is to use popsicle sticks between inner cover & top box or place 1/4 inch blocks between inner cover and the top cover.

-Perform quick hive check on weather permitting days. Weather permitting is usually defined as 50 degrees or above with little or no breeze and preferably sunny. A good indicator whether it is warm enough to take a peek and work the hive is you see bees flying—that is more than 1 or 2!

-You may think about feeding sugar syrup— particularly if it has been a warm/mild winter.

### **Beekeeper Activities:**

-Pay your Club & NCSBA dues for the year

-Become a better beekeeper through club participation, meetings, activities, reading, studying

-Volunteer to mentor a new beekeeper, speak about bees at elementary schools

-Inspect, repair, replace equipment and prepare for the spring honey flow

-Order your bees: packages/nucs

-Order needed equipment

-Request new beekeeping catalogs from suppliers

- Review your notes from last year and see what worked and what didn't

-Put a plan in place for this year

- Have fun!





## Important Dates, Events & Activities for 2014

### Johnston County Beekeepers 2014 Program Agenda

(programs/speakers may be subject to change)

**Feb:** Joint Meeting w Wake County Beekeepers: **Tues. Feb 11th** 4011 Carya Drive, Raleigh, NC

Key note Speaker: Dr. Larry Connor

Topic: Reading and Understanding your bees

2 part program: Part 1 Lecture format, Part 2: Q&A / Book sales and signing

Time: 6:00—9:00pm

**March 17th:** George Skinner: Top Bar Hives

**April 21st:** Sugar Shake Out: Will Hicks—Varroa Mites, Sugar Shake Workshop/Varroa Treatments

**May 19th:** Rick Coor—Queen Management

**June 16th:** Honey Extraction

**July 18: FRIDAY:** Tour de Hive: Summer Tour:

Bayer Bee Care Center Tour/ Lunch @ Busy Bee Café/ Ronnie Fish's—Pick your own Berry Farm

**August 18th:** Danny & Mary Jaynes: How to prepare and enter the State Fair: step by step

**Sept 15th :** Tom Underhill—Live lip balm making demo

**Oct 20th:** Assassination of a Queen Party

**Nov: 17th:** Candle Making demo

**Dec 15th:** Annual Christmas Banquet

### **March 2014**

NCSBA Spring Meeting: March 6-8th

Wilmington NC Convention Center

Visit web: [www.ncbeekeepers.org](http://www.ncbeekeepers.org) for more details

### **May 2014**

Ham & Yam Festival - Saturday May 3

Please mark your calendars and plan on helping with the booth that day. Sign up will be soon!

### **July 2014**

NCSBA Summer Meeting: July 10-12

Wilkes County Community College

Visit web: [www.ncbeekeepers.org](http://www.ncbeekeepers.org) for more details

### **NC 4-H State Beekeeping Essay Contest:**

**Topic "Beekeeping in Colonial Times,"** deadline **Feb 15, 2014**

Please consider passing this opportunity on to your 4-H youth

(Only active 4-H youth are eligible)

Youth can delve deep into understanding the importance of honey bees in colonial times.

The North Carolina state winner receives a \$50 award and the winning essay is submitted to the national contest through the Foundation for the Preservation of Honey Bees. If selected as a national winner, 1st place is \$750, 2nd is \$500 and 3rd is \$250. Our state essay topic and judging criteria follow the national program.

For the topic & essay guidelines email: [info@honeybeepreservation.org](mailto:info@honeybeepreservation.org)

Essays are **due February 15th, 2014.**

Please send essays **ELECTRONICALLY** to Liz Driscoll at [liz\\_driscoll@ncsu.edu](mailto:liz_driscoll@ncsu.edu)

Johnston County Agricultural Center  
North Carolina Cooperative Extension Service  
College of Agricultural and Life Sciences  
2736 NC 210 Highway  
Smithfield, N.C. 27577  
(919)989-5380  
Official Business